

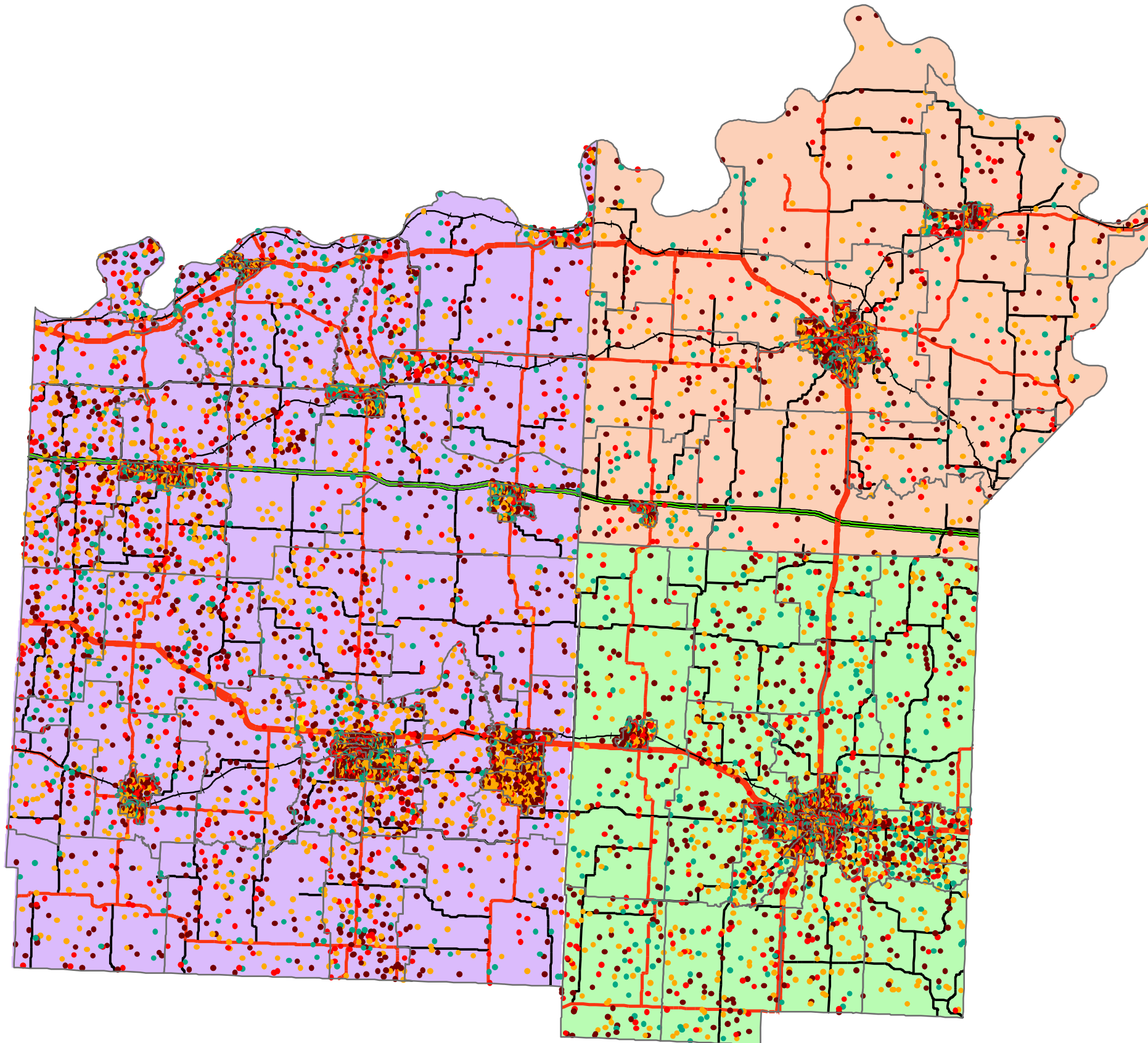
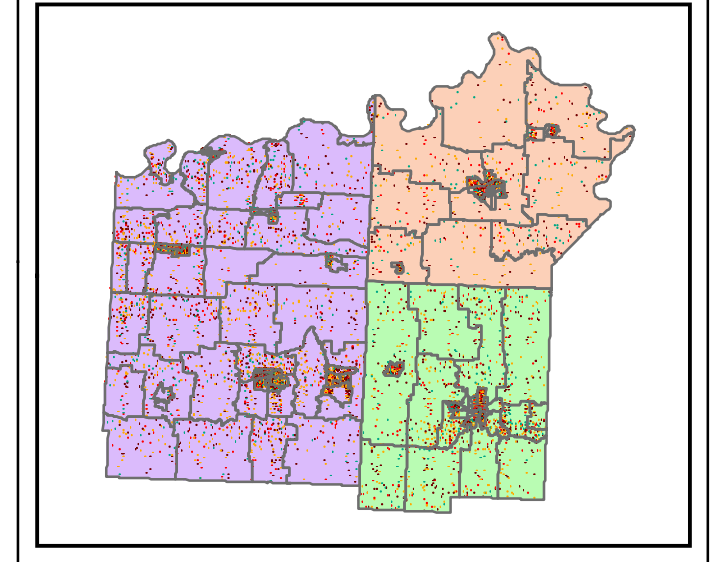
Pioneer Trails Regional Planning Commission

Population Under 18/ Over 65, Disabled, Impoverished



Population
Under 18/ Over 65,
Disabled, Impoverished

1 inch = 25 miles



Legend

Population Under 18/ Over 65,
Disabled, Impoverished

••••• 1 Dot = 10 people

Transportation

— Interstate Highway

— US Highway

— State Highway

— State Route

— Airport/Airfield Runway

— Rail Main Network

— Rail Siding/Spur

MODOT District

2

4

5